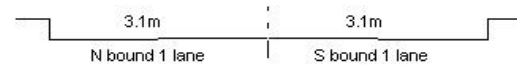
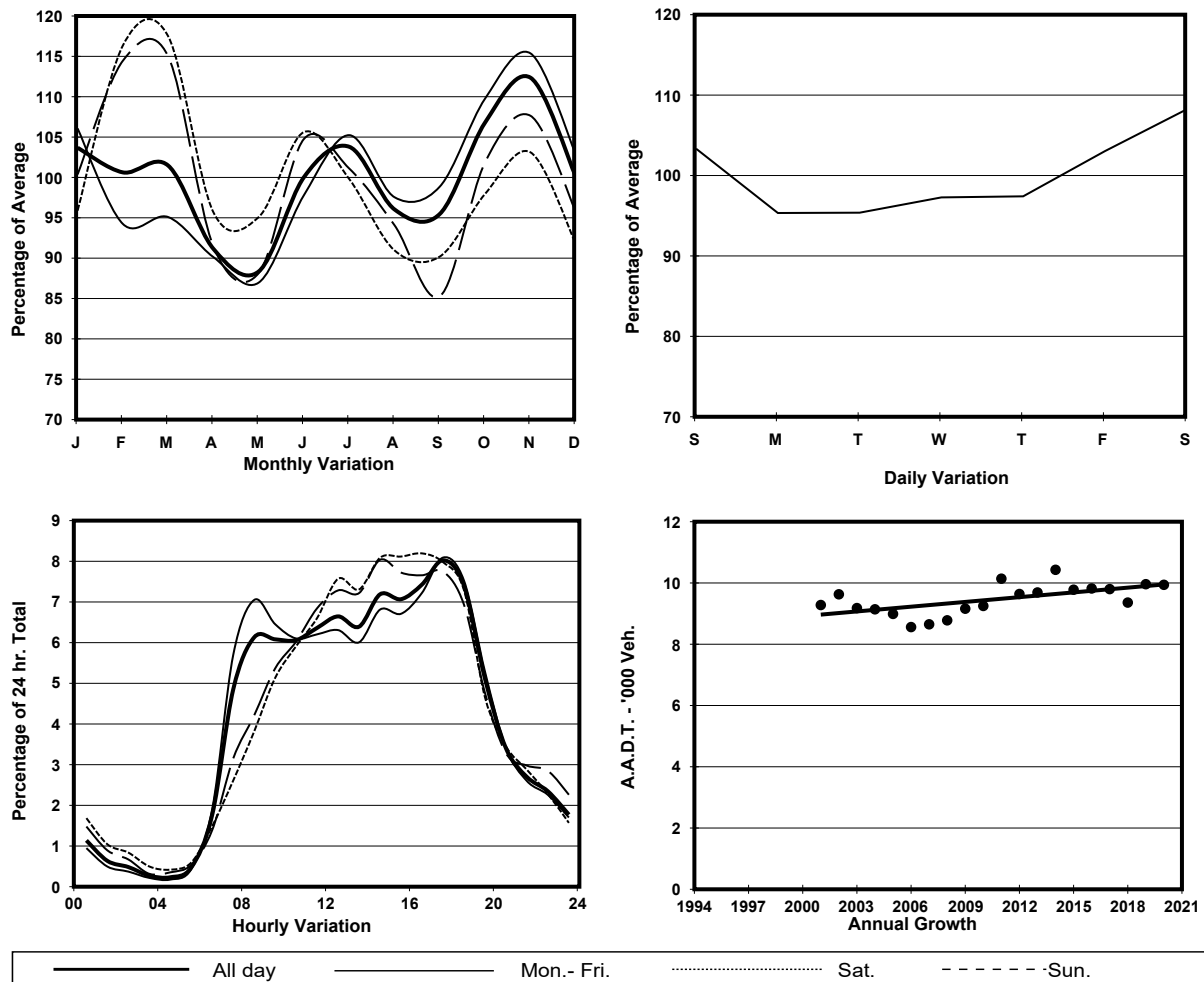


YEAR	2020	LINK	TAI TAM RD (from CHAI WAN RD to SHEK O RD)
CORE STATION	1021		
ROAD NETWORK	MAJOR		
ROAD TYPE	PRIMARY DISTRIBUTOR		



1. TRAFFIC FLOW VARIATION AND GROWTH



2. TRAFFIC CHARACTERISTICS (BY DIRECTION)

Parameter	All - Day	Mon. - Fri.	Sat.	Sun.
SOUTH BOUND				
A.A.D.T.	4220	4100	4600	4420
R 12 / 24 - %	77.2	76.6	77.9	79.4
R 16 / 24 - %	92.6	93.1	91.7	91.6
AM Peak Hour	0900-1000	0900-1000	0900-1000	0900-1000
One-way flow at AM peak hour	270	270	260	240
T - % (AM)	-	6.1	-	-
PM Peak Hour	1800-1900	1800-1900	1600-1700	1600-1700
One-way flow at PM peak hour	280	300	330	340
T - % (PM)	-	1.6	-	-
Prop.of commercial vehicles - 16 hr.	-	5.6	-	-
NORTH BOUND				
A.A.D.T.	5720	5610	6190	5760
R 12 / 24 - %	81.5	82.9	78.5	78
R 16 / 24 - %	93.6	94.3	92.3	92
AM Peak Hour	0800-0900	0800-0900	0900-1000	0900-1000
One-way flow at AM peak hour	380	450	320	280
T - % (AM)	-	4.4	-	-
PM Peak Hour	1700-1800	1700-1800	1700-1800	1700-1800
One-way flow at PM peak hour	530	530	540	550
T - % (PM)	-	4.3	-	-
Prop.of commercial vehicles - 16 hr.	-	7.1	-	-

3. OTHER INFORMATION AND COMMENT

4. Vehicle classification and occupancy - Monday to Friday

Time		Class of vehicle									
		Motor Cycle	Private Car	Taxi	Private LB	PLB	Goods veh.		Non Fr. Bus	Fr. Bus	
							Light	M & H		SD	DD
0700-0800	Pro	8.2	55.1	12.7	5.1	3.2	5.7	1.3	6.3	0.0	2.5
	Ocp	1.1	1.3	2.2	14.3	12.0	2.3	1.0	21.4	0.0	25.1
0800-0900	Pro	3.3	69.4	10.4	1.2	1.7	10.4	0.4	1.7	0.0	1.6
	Ocp	1.0	1.3	2.2	1.3	14.0	1.8	1.0	3.8	0.0	22.1
0900-1000	Pro	4.9	56.9	9.2	0.0	2.2	21.1	2.2	1.6	0.0	1.9
	Ocp	1.0	1.4	2.1	0.0	7.5	1.9	1.0	9.0	0.0	21.3
1000-1100	Pro	5.9	46.6	13.6	1.2	1.8	23.0	3.5	2.4	0.0	2.1
	Ocp	1.1	1.4	2.0	3.0	11.0	1.7	1.8	3.0	0.0	29.9
1100-1200	Pro	2.2	46.7	16.1	0.7	4.4	13.1	10.9	3.7	0.0	2.2
	Ocp	1.0	1.4	1.8	2.0	10.3	1.8	1.5	19.8	0.0	32.1
1200-1300	Pro	6.8	59.5	9.9	1.9	3.1	10.5	3.7	2.5	0.0	2.0
	Ocp	1.1	1.5	1.9	2.3	9.2	1.6	1.7	4.0	0.0	34.5
1300-1400	Pro	4.8	56.5	10.2	4.2	4.2	12.6	3.0	2.4	0.0	2.0
	Ocp	1.1	1.6	1.9	1.6	9.4	1.9	1.4	17.0	0.0	31.8
1400-1500	Pro	8.7	53.0	10.1	3.4	3.4	14.8	3.4	1.3	0.0	2.0
	Ocp	1.2	1.4	1.8	3.4	13.4	1.9	1.4	4.5	0.0	28.9
1500-1600	Pro	9.2	49.1	14.0	0.5	4.3	17.3	2.2	1.6	0.0	1.8
	Ocp	1.1	1.5	2.1	1.0	10.8	1.7	1.3	2.7	0.0	37.3
1600-1700	Pro	5.8	55.6	12.2	1.1	3.7	14.3	1.6	3.7	0.0	2.0
	Ocp	1.1	1.5	1.9	3.5	15.0	1.7	1.7	12.6	0.0	32.5
1700-1800 Peak hour	Pro	8.9	59.9	10.7	0.9	3.6	12.4	0.0	2.2	0.0	1.4
	Ocp	1.0	1.5	2.5	1.5	15.8	1.8	0.0	9.2	0.0	40.5
1800-1900	Pro	7.1	72.6	13.3	0.0	2.7	1.8	0.4	0.9	0.0	1.3
	Ocp	1.1	1.5	2.0	0.0	17.5	1.0	1.0	7.0	0.0	37.3
1900-2000	Pro	0.7	77.3	13.4	0.0	3.0	1.5	0.0	1.5	0.0	2.6
	Ocp	1.0	1.4	1.7	0.0	8.8	1.0	0.0	7.5	0.0	13.9
2000-2100	Pro	6.7	62.6	17.9	0.0	3.4	4.5	0.0	1.1	0.3	3.6
	Ocp	1.0	1.4	1.6	0.0	5.0	1.0	0.0	30.0	1.0	8.7
2100-2200	Pro	7.2	58.0	21.7	0.0	4.3	4.3	0.0	0.0	0.0	4.3
	Ocp	1.0	1.3	1.6	0.0	12.3	1.0	0.0	0.0	0.0	7.6
2200-2300	Pro	10.5	60.5	13.2	0.0	5.3	2.6	0.0	0.0	0.0	7.9
	Ocp	1.0	1.4	1.2	0.0	7.0	1.0	0.0	0.0	0.0	6.3
16 hours	Pro	6.1	59.0	12.4	1.3	3.2	11.5	2.1	2.2	0.1	2.1
	Ocp	1.1	1.4	2.0	5.1	11.8	1.8	1.4	11.8	1.0	25.7

Legend: Pro. Proportion of vehicles in % (Sum may not add up to 100% due to figure rounding)*

Ocp. Average occupancy of vehicles including both driver and passengers*

M&H Medium and Heavy

* All traffic data are collected from combined bounds